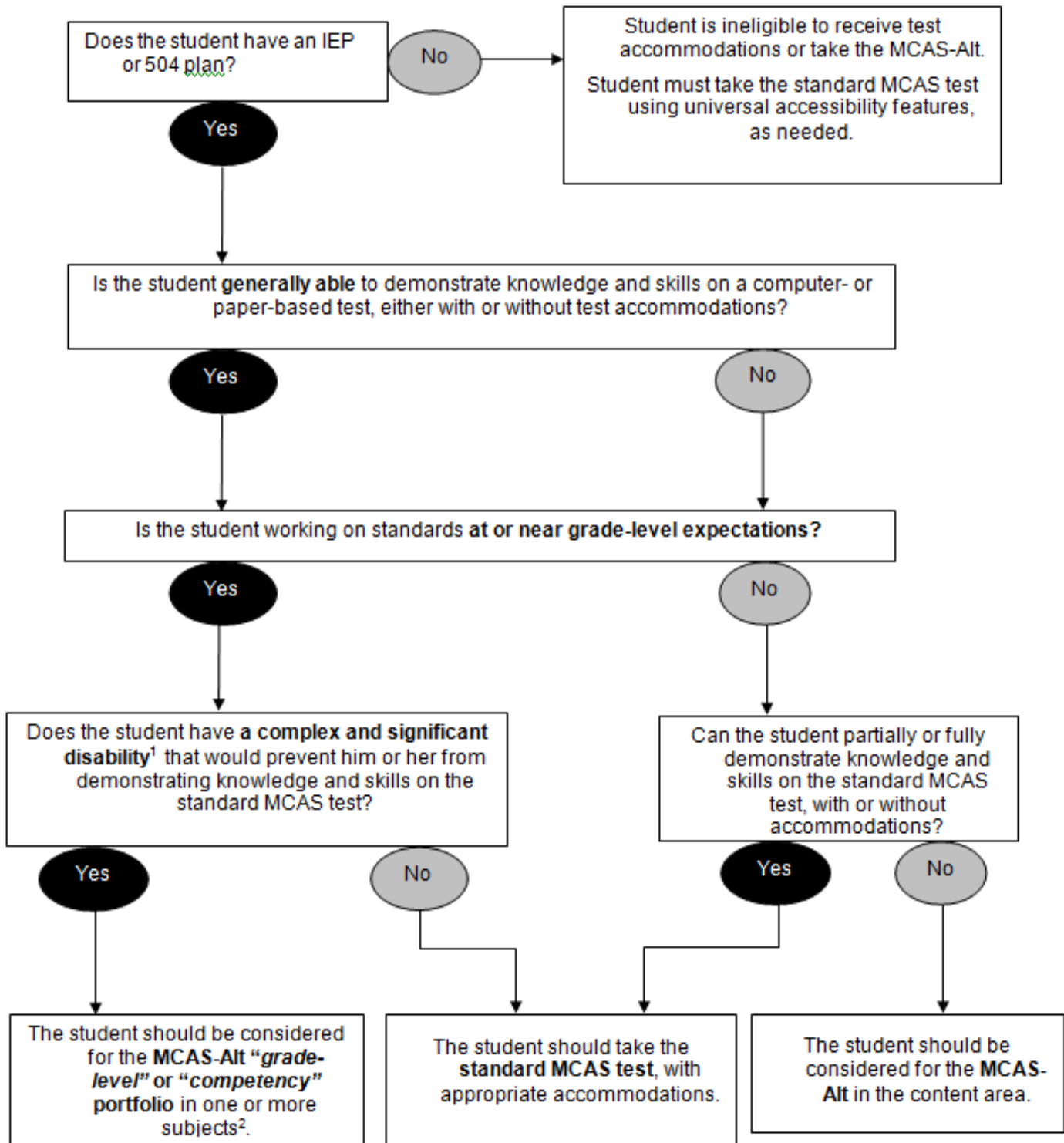


## Decision-Making Tool for MCAS Participation

The chart shown below may be used by IEP teams and 504 plan coordinators to make annual decisions regarding appropriate student participation in MCAS *for each content area* being assessed.



<sup>1</sup> An explanation and examples of "complex and significant disabilities" can be found on page 11 of the [Educator's Manual for MCAS-Alt](#).

<sup>2</sup> Details on the submission of "grade-level" and "competency" portfolios can be found on pages 41–61 of the [Educator's Manual for MCAS-Alt](#).